

**Division of Career and College Readiness
Career and Technology Education**

Alternate Site: CTE Programs of Study

Statewide CTE Articulation Agreements.....	2
Arts, Media and Communication	3
[PAGE HAS NO HEADLINE]	4
Business Management and Finance	5
Construction and Development.....	6
Career Research and Development.....	7
Consumer Services, Hospitality and Tourism	8
Environmental, Agriculture and Natural Resources	9
Health and Biosciences	10
Human Resource Services	11
Maryland's 10 Clusters.....	12
Information Technology.....	14
Manufacturing, Engineering and Technology	15
[PAGE HAS NO HEADLINE]	16
[PAGE HAS NO HEADLINE].....	17
2018 CTE Awards of Excellence	18
2017 Award Winners	19
CTE Marketing Materials	20
CTE Month 2019.....	21
Empowering the Workforce of the Future.....	22
CTE Videos	25
DECA.....	26
[PAGE HAS NO HEADLINE].....	28
FFA	29
Career Technology Student Organizations (CTSO)	30
SkillsUSA: Job Ready on Day One!.....	31
Can a student complete a program of study and meet all of the course requirements for college entry?	32
Profiles	33
Profiles	34

Statewide CTE Articulation Agreements

<http://marylandpublicschools.org/programs/Pages/CTE-Programs-of-Study/Articulation/index.aspx>

CTE Program of Study	Possible Credits	College	
Arts Media and Communication			
Graphic Communications (PrintED)	10 Credits		
	16 Credits		

Table has header row designated, which is great!

Avoid merging cells if at all possible. In this case, there’s no reason “Graphic Communications (PrintED)” can’t be spelled out on two different rows, one for 10 credits, one for 16 credits.

I’m guessing that the data currently showing beneath the unfinished table will be moving into that table. If so, I suggest formatting it as multiple tables with headings as follows:

Arts Media and Communication

CTE Program of Study	Possible Credits	College
Graphic Communications (PrintED)	10 Credits	Montgomery College
Graphic Communications (PrintED)	16 Credits	Bridgemont Community & Technical College

Business Management and Finance

CTE Program of Study	Possible Credits	College
NAF Academy of Finance	Various	Various - National Partnerships
Various CLEP Exams	Various	Various - National Partnerships

Consumer Services, Hospitality, and Tourism

CTE Program of Study	Possible Credits	College
American Culinary Federation	18 Credits	Stratford University
ProStart Food & Beverage Management	18 Credits	Stratford University
NAF Academy of Hospitality & Tourism	Various	Various - National Partnerships

Arts, Media and Communication

<http://www.marylandpublicschools.org/programs/Pages/CTE-Programs-of-Study/Clusters/AMC.aspx>

<h1>Arts, Media and Communication</h1>

<h2></h2>

Remove blank <h2> line.

<h2>Programs of Study</h2>

</h2>

Graphic Communications (PrintED) <h3>

Make the two programs <h3>



None of the graphics have alt text. If the purpose of the graphics is to simply decorate the page, not communicate more information, then alt="" is okay. However, if sighted people are gaining information from the graphic, that information must be put in the alt text.

This is true for all the Career Cluster pages that follow.

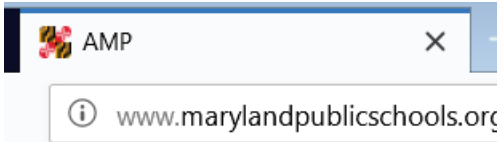
Program Highlight:

Graphic Communications (PrintED)

Sidebar headings need to be designated as headings.

[PAGE HAS NO HEADLINE]

<http://www.marylandpublicschools.org/programs/Pages/CTE-Programs-of-Study/Clusters/AMP.aspx>



Uninformative Title.



Divisions/Programs

Maryland CTE

- > [Maryland CTE Programs](#)
- Home
- > [Clusters and Programs](#)
- > [Profiles in CTE](#)
- > [Student Organizations](#)
- > [Marketing Materials](#)
- > [CTE Awards of Excellence](#)

Page is blank.

Business Management and Finance

<http://www.marylandpublicschools.org/programs/Pages/CTE-Programs-of-Study/Clusters/BMF.aspx>

`<h2>`Programs of Study

`</h2>`

`<h2></h2>`

Remove blank `<h2>` line.

Academy of Finance (NAF)

The National Academy Foundation (

Make the names of the individual programs of study `<h3>`

See notes on AMC page regarding decorative images.

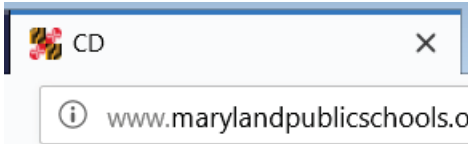
Program Highlight:

**Business Management and
Finance College Credit**

Sidebar headings need to be designated as headings.

Construction and Development

<http://www.marylandpublicschools.org/programs/Pages/CTE-Programs-of-Study/Clusters/CD.aspx>



Uninformative Title.

<h3>Programs of Study

</h3>

Construction Design and Management Make the names of the individual programs of study <h3>

<h2>Divisions/Programs</h2>

<h2>

</h2>

Remove blank <h2> line.

<h2>Maryland CTE</h2>

See notes on AMC page regarding decorative images.

Program Highlight:

**Construction Professions
and Maintenance**

Sidebar headings need to be designated as headings.

Career Research and Development

<http://www.marylandpublicschools.org/programs/Pages/CTE-Programs-of-Study/Clusters/CRD.aspx>

The text is pretty dense. Recommend breaking it up with headings such as:

<h2>The Courses</h2>

The program consists of two in-school course(s), a portfolio development project, and a work-based learning (WBL) experience. The first course, Career Research and Development, provides students with instruction on Maryland's Career Development Model and includes self-awareness, career awareness and evaluation of career and academic choices through knowledge of the Maryland Career Clusters and Career Technology Education Programs of Study. The second course, Career Development, Preparation, and Transition, continues the self-assessment and career awareness process, however, this course is more focused on career preparation and transition as students enter into a formal WBL experience, as well as, plan for employment, education, and training beyond high school.

<h2>Skills for Success</h2>

The basis for being successful in the working world is to demonstrate, in a variety of ways, competency in the Skills for Success. These skills include (1) learning; (2) critical thinking; (3) communicating effectively; (4) grasping constantly changing technologies; and, (5) working effectively with others. Students participating in the Career Research and Development (CRD) Program have the unique opportunity to practice these skills through a supervised work-based learning experience, the portfolio development process, and in-class instruction as they focus on continuously improving their skills to move beyond high school into employment and further education.

<h2>Work-Based Learning</h2>

The workplace component is a mentored, on-the-job, work experience with a written, personalized, work-based learning plan and a formal agreement between the student, school and employer. The goal of the WBL experience is to expose students to authentic employment opportunities that link to students' career interests, LSS career clusters, and employment demand. Work-based learning placements will prepare students for employment that lead to a family-supporting wage. Students develop and maintain a career portfolio throughout the program documenting progress related to their work plan. The elements of the portfolio shall document academic, technical, employability and personal skill development. The program culminates with students presenting their final portfolio documenting personal growth, achievements and learning experiences from their program.

managing materials
> CTE Awards of Excellence

<h2>

</h2>

Remove blank <h2> lines.

<h2>

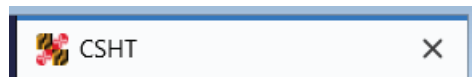


Images don't need headings.

</h2>

Consumer Services, Hospitality and Tourism

<http://www.marylandpublicschools.org/programs/Pages/CTE-Programs-of-Study/Clusters/CSHT.aspx>



W The Hub Google MSDE

Uninformative Title.

<h2>Programs of Study

</h2>

Culinary Arts (ACF)

Make the names of the individual programs of study <h3>

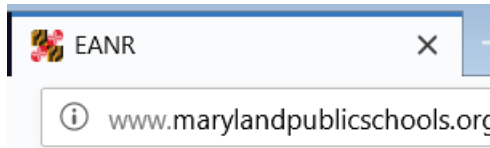
Program Highlight

Sidebar headings need to be designated as headings.

Culinary Arts (ACF):

Environmental, Agriculture and Natural Resources

<http://www.marylandpublicschools.org/programs/Pages/CTE-Programs-of-Study/Clusters/EANR.aspx>



Uninformative Title.

`<h2>Programs of Study</h2>`

`<h2> </h2>`

Remove blank `<h2>` line.

`<h3>Curriculum for Agriculture Science Education (CASE)</h3>`

First individual program of study is correctly designated an `<h3>`.

The other 2 should be `<h3>` as well.

Horticultural Services: Certified Professional Horticulturalist (CPH)

The Horticultural Services program of study is based on requirements for the C Horticulturalist (CPH) certification used by the Maryland "Green Industry." Student courses which include: Introduction to Environmental/Plant/Animal Science, Food Plant Production, and Landscape Design and Management. Students have the Student-Level CPH certification by taking and passing the industry exam.

Environmental Studies/Natural Resources

`<h2>Divisions/Programs</h2>`

`<h2>`

`</h2>`

Remove blank `<h2>` lines.

`<h2>Maryland CTE</h2>`

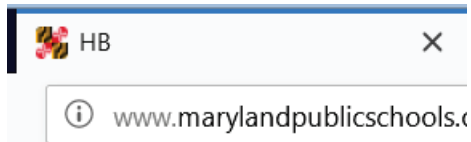
Program Highlight:

Curriculum for Agriculture Science Education (CASE)

Sidebar headings need to be designated as headings.

Health and Biosciences

<http://www.marylandpublicschools.org/programs/Pages/CTE-Programs-of-Study/Clusters/HB.aspx>



Uninformative Title.

<h2>Programs of Study

</h2>

Academy of Health Professions

Make the names of the individual programs of study <h3>

<h2>Divisions/Programs</h2>

<h2>

</h2>

Remove blank <h2> lines.

<h2>Maryland CTE</h2>

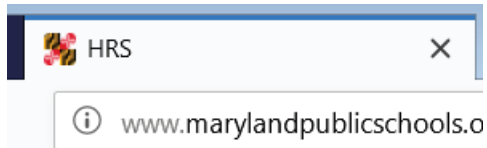
Program Highlight:

Sidebar headings need to be designated as headings.

Biomedical Sciences

Human Resource Services

<http://www.marylandpublicschools.org/programs/Pages/CTE-Programs-of-Study/Clusters/HRS.aspx>



Uninformative Title.

<h2>Programs of Study</h2>

Fire Science: Maryland Fire and Rescue Institute (MFRI) Make individual programs of study <h3>

- > [Marketing Materials](#)
- > [CTE Awards of Excellence](#)

<h2>

</h2>

Remove blank <h2> line.

Program Highlight:

Sidebar headings need to be designated as headings.

Teacher Academy of Maryland (TAM)

Maryland's 10 Clusters

<http://www.marylandpublicschools.org/programs/Pages/CTE-Programs-of-Study/Clusters/index.aspx>

Spelling typo: Enviornmental

alt=Arts, Media, and Commu



alt=tions



alt=



alt=



Arts, Media, and
Communications

Business Management
and Finance

Construction and
Development

Consumer Services,
Hospitality and Tourism

alt=



alt=



alt=



alt=Information Technology



Alt text is hit and miss. Because these graphics serve as buttons – you click on them if you want to go somewhere else – they ALL need alt text that says where the user will go if the button is clicked.

This is doubly important here, because the tab order of the buttons and links is off. Here's the way a screen reader user currently encounters these links:

- Link: Arts, Media and Communications.
- Link:
- Link:
- Link: Arts, Media and Communications.
- Link: Business Management and Finance
- Link: Construction and Development
- Link: Consumer Services, Hospitality and Tourism
- Link:
- Link:
- Link:
- Link: Information Technology
- Link: Enviornmental, Agriculture and Natural Resources
- Link: Health and Biosciences
- Link: Human Resource Services
- Link: Information Technology

In other words, this is set up in a table, so the screen reader reads across the first row of buttons, then goes down to the second row, which is links, third row buttons, fourth row links, etc.

Thinking this through, the table should really be set up like this:

 <p><u>Arts, Media, and Communications</u></p>	 <p><u>Business Management and Finance</u></p>	 <p><u>Construction and Development</u></p>	 <p><u>Consumer Services, Hospitality and Tourism</u></p>
 <p><u>Enviornmental, Agriculture and Natural Resources</u></p>	 <p><u>Health and Biosciences</u></p>	 <p><u>Human Resource Services</u></p>	 <p><u>Information Technology</u></p>

[Grid left visible for demonstration purposes.]

And each cell gets coded like this [this part's for Josh]:

Option 1: Button and link connected, so it doesn't matter where user clicks

```
<a href="/programs/Pages/CTE-Programs-of-Study/Clusters/AMC.aspx">Arts, Media, and Communications</a>
```

Option 2: Graphic is not a button, user clicks on the link

```
<a href="/programs/Pages/CTE-Programs-of-Study/Clusters/AMC.aspx" title="AMC">Arts, Media, and Communications</a>
```

Information Technology

<http://www.marylandpublicschools.org/programs/Pages/CTE-Programs-of-Study/Clusters/it.aspx>

`<h3>Programs of Study</h3>`

`<h2>` not `<h3>`

Academy of Information Technology (NAF)

Make individual programs of study `<h3>`

[> Marketing Materials](#)

[> CTE Awards of Excellent](#)

`<h2>`

`</h2>`

Remove blank `<h2>` line.

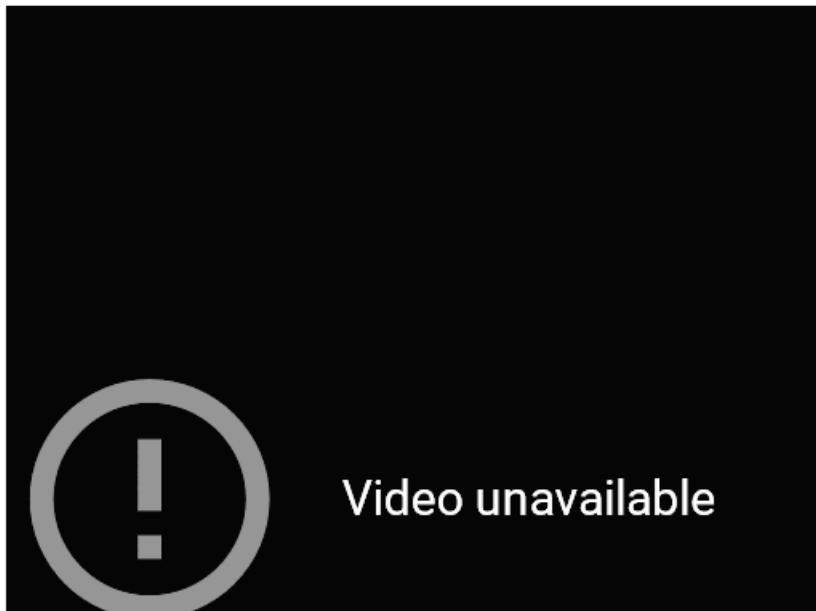
Program Highlight:

CTE Student Video

Sidebar headings need to be designated as headings.

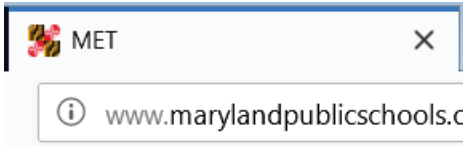
**IT Networking Academy
(Cisco)**

When I click on CTE Student Video, I get this from Youtube:



Manufacturing, Engineering and Technology

<http://www.marylandpublicschools.org/programs/Pages/CTE-Programs-of-Study/Clusters/MET.aspx>



Uninformative title.

<h2>Programs of Study</h2>

Project Lead The Way Engineering

Make individual programs of study <h3>

process. The program includes four c
school system. The student must con

<h2>

Remove blank <h2> line.

</h2>

> Marketing Materials

> CTE Awards of Excellent

<h2>

</h2>

Remove blank <h2> line.

Program Highlight:

Project Lead The Way Pre-Engineering

Sidebar headings need to be designated as headings.

[PAGE HAS NO HEADLINE]

<http://www.marylandpublicschools.org/programs/Pages/CTE-Programs-of-Study/Clusters/TT.aspx>

SEO Page Properties

Title

PageHeadline

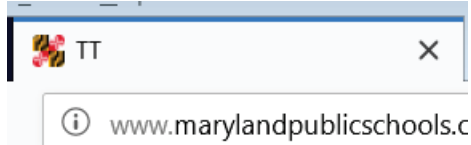


No PageHeadline.

`<h1></h1>`

No Headline = a blank `<h1>` on the page:

Uninformative Title:



`<h2>` Programs of Study

`</h2>`

Automotive Technician (NATEF) Make individual programs of study `<h3>`

- > Marketing Materials
- > CTE Awards of Excellent

`<h2>`

`</h2>`

Remove blank `<h2>` line.

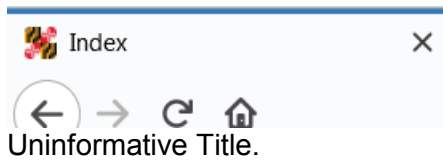
Program Highlight:

Sidebar headings need to be designated as headings.

Automotive Technician

[PAGE HAS NO HEADLINE]

http://www.marylandpublicschools.org/programs/Pages/CTE-Programs-of-Study/CTE_Awards_of_Excellence/Index.aspx



HOME DIVISIONS/PROGRAMS

 No PageHeadline.

`<h1></h1>`

No Headline = a blank `<h1>` on the page:

[Click here to see the 2018 Award Winners](#)

[Click here to see the 2017 Award Winners](#)

Recommend:

- [2018 Award Winners](#)
- [2017 Award Winners](#)

This `<h2>` is not house style:

`<h2> Maryland CTE</h2>`

[Maryland CTE Programs Home](#)

House style is black and left justified:

`<h2>Maryland CTE</h2>`

[Maryland CTE Programs Home](#)

2018 CTE Awards of Excellence

http://marylandpublicschools.org/programs/Pages/CTE-Programs-of-Study/CTE_Awards_of_Excellence/2018-Award-Winners.aspx

<h2>Divisions/Programs</h2>

Why is this here twice?

<h2>Divisions/Programs</h2>

This <h2> is not house style:

<h2> Maryland CTE</h2>

> Maryland CTE Programs
Home

House style is black and left justified:

<h2>Maryland CTE</h2>

> Maryland CTE Programs
Home

OUTSTANDING BUSINESS PARTNERSHIPS - SECONDARY

The Career Pathway Initiative Community Group

Partnership with Talbot County Public Schools

The name of each award should be tagged <h2>

alt=



OUTSTANDING BUSINESS PARTNERSHIPS - SECONDARY
The Career Pathway Initiative Community Group
Partnership with Talbot County Public Schools

alt=



OUTSTANDING BUSINESS PARTNERSHIPS - POSTSECONDARY
City of Frederick Audio Visual Department
Partnership with Frederick Community College

alt=



OUTSTANDING CTE PROGRAM - SECONDARY
Homeland Security Program
Washington County Public Schools

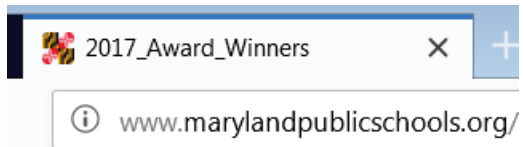
None of the 12 photos on this page have alt text. Only 5 of the 12 go on to name the person in the photo. These photos are not “purely decorative.”

Alt text should identify the people in the photo and why they’re in the photo. For example, if you don’t know the names of the 13 people in this photo, alt text should still be [I’m just guessing from looking at the photo]: “13 teachers and administrators in a school hallway.”



2017 Award Winners

http://test.msde.maryland.gov/programs/Pages/CTE-Programs-of-Study/CTE_Awards_of_Excellence/2017_Award_Winners.aspx



This isn't a Title, it's a file name.

PageHeadline: Whose awards? Awards for what? It should mirror the 2018 title: 2017 CTE Awards of Excellence

OUTSTANDING BUSINESS PARTNERSHIPS – SECONDARY

National Cancer Institute's Werner H. Kirsten Student Intern Program
Partnership with Frederick County Public Schools

Make award titles <h2>

This <h2> is not house style:

<h2> Maryland CTE</h2>

> Maryland CTE Programs
Home

House style is black and left justified:

<h2>Maryland CTE</h2>

> Maryland CTE Programs
Home



OUTSTANDING BUSINESS PARTNERSHIPS – SECONDARY
National Cancer Institute's Werner H. Kirsten Student Intern Program
Partnership with Frederick County Public Schools

None of the photos on this page have alt text. While some of them are obviously stock photos, which can be alt="" because they don't add new information for the user, many of them are not stock.



OUTSTANDING BUSINESS PARTNERSHIPS – POSTSECONDARY
Maryland State Police
Partnership with Frederick Community College

For example, the alt text on this one should be something like "Advertisement for the Frederick Community College Criminal Justice program, featuring a Maryland State Police Officer entering her patrol car."

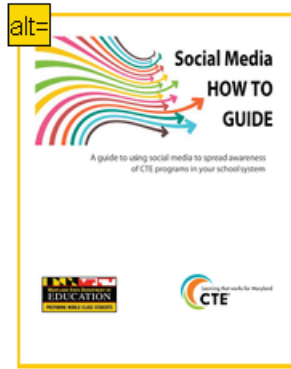
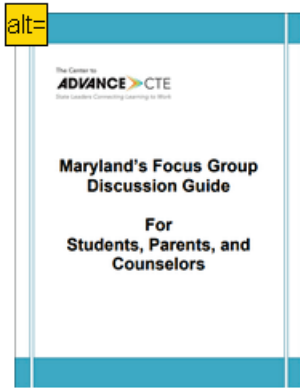
CTE Marketing Materials

http://www.marylandpublicschools.org/programs/Pages/CTE-Programs-of-Study/CTE_Marketing/Index.aspx

Maryland's Focus Group Discussion Guide

Interested in finding out what CTE messages will resonate with the students, parents, and counselors in your school system? If so, use the

The title of each publication should be <h2>



Of the four graphics of publications on this page, the first two are coded to be buttons (clicking on them takes you to the document) and the last two aren't. Either make all four buttons, or all four not buttons. If they're buttons, they all need alt text that says where clicking on the button will take the user (alt="Maryland's Focus Group Discussion Guide"). If they're not buttons, then the current alt text (alt="") is fine.

See Page 32 for a discussion of these publications.

This <h2> is not house style:

<h2> Maryland CTE </h2>

> Maryland CTE Programs Home

House style is black and left justified:

<h2>Maryland CTE</h2>

> Maryland CTE Programs Home

CTE Month 2019

http://www.marylandpublicschools.org/programs/Pages/CTE-Programs-of-Study/CTE_Month/Index.aspx
[Proclamation 2019](#)

[Proclamation 2019](#)

This is a scan of a paper document. Either tag it and add alt text equivalent to the complete text of the Proclamation, or create a text-only companion document with the complete text.

[Your Future is Here Flyer](#)

Document is a tagged PDF, but everything has been tagged as graphics, not text. If this was done in InDesign, the designer should be able to go back and tag the document properly (headings, alt text, etc.) Another option would be to make a text-only or text-only large print version to post along with this complex document.

This <h2> is not house style:

<h2> **Maryland CTE** </h2>

> [Maryland CTE Programs](#)
Home

House style is black and left justified:

<h2> **Maryland CTE** </h2>

> [Maryland CTE Programs](#)
Home

Empowering the Workforce of the Future

http://www.marylandpublicschools.org/programs/Pages/CTE-Programs-of-Study/CTE_Videos/Index.aspx

Are all these videos about “Empowering the Workforce of the Future”? I’m confused by the Headline – should it refer to Video in some way?

Lots of blank heading lines to remove:

`<h3>`
`<h3>`
`<h3>` Cara Trembly -
`<h3>`
`<h3>`
`<h3>` Laila Mirz
`<h3>`

`<h2>`
`</h2>`
`<h2>`
Maryland_CTE`</h2>`
`<h2>` `</h2>`
`<h2>`
`</h2>`
`<h2>` CTE Social `>`prepareForTheRealWorld


Graphics don't get heading tags:


`<h2>`

`</h2>`

`<h2>`

`</h2>`

`alt=`

`alt=` Alt text should be “CTE. Learning that works for Maryland.”

`alt=`

`alt=` Alt text-wise, this is purely decorative and doesn't need alt text. Does it have a purpose?

These `<h2>`s are not house style:

`<h2>` **Maryland CTE**`</h2>`

`>` Maryland CTE Programs
Home

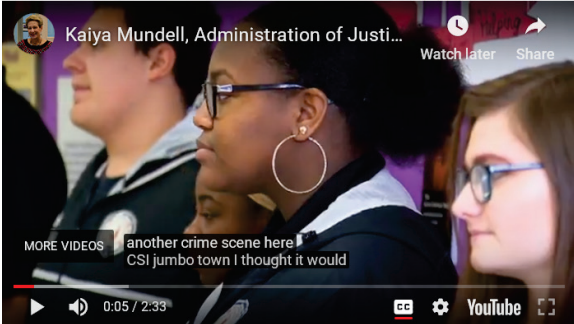
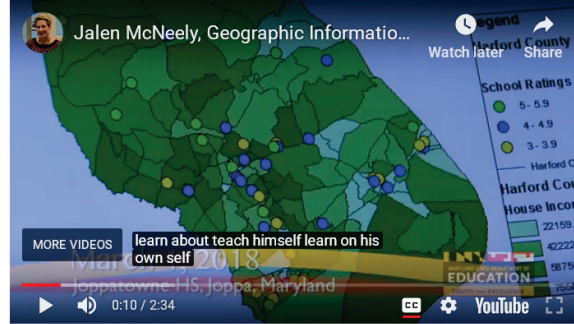
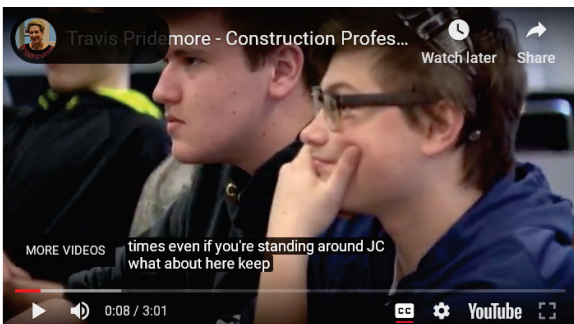
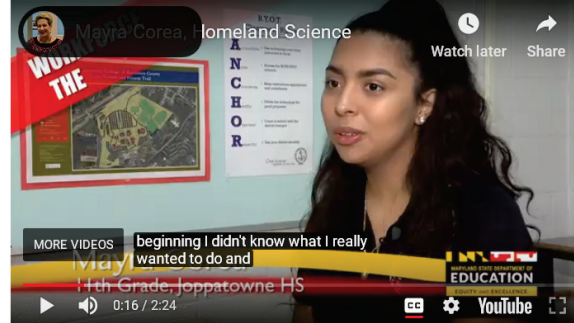
`<h2>` **CTE Social**
Media`</h2>`

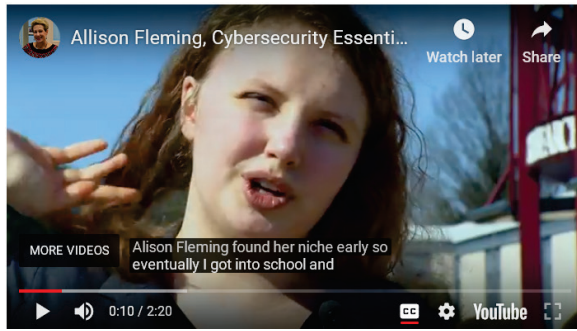
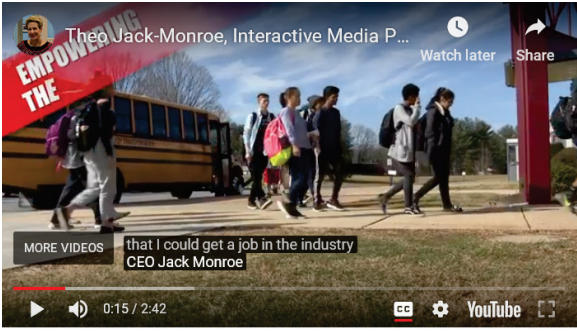
House style is black and left justified:

`<h2>` **Maryland CTE**`</h2>`

`>` Maryland CTE Programs
Home

All of these videos have inaccurate, uncorrected Youtube autocaptions. None of them have a companion Visual Description/transcript document that describes what's going on in the video along with what people are saying.





CTE Videos

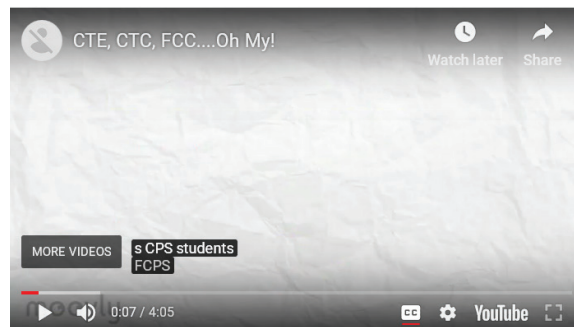
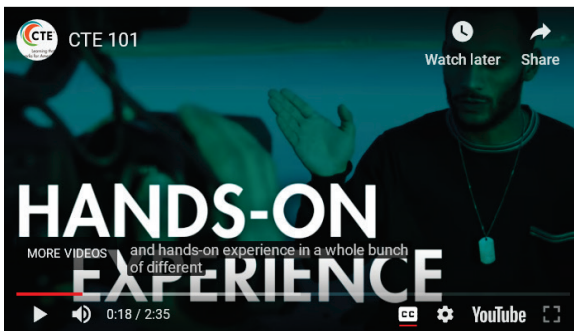
http://www.marylandpublicschools.org/programs/Pages/CTE-Programs-of-Study/CTE_Videos/CTEVideos.aspx

Recommend breaking out the headings and tagging them, like this:

`<h2>Advance CTE</h2>`

Advance CTE's newest video provides an overview of how Career Technical Education (CTE) prepares learners for their futures while closing the skills gap for employers across the country. Use this video with critical stakeholders to continue to combat false perceptions of what CTE is and who it is for. This video is designed to help you make the case for CTE in your community and demonstrate the benefits of today's CTE!

All of these videos have inaccurate, uncorrected Youtube autocaptions. None of them have a companion Visual Description/transcript document that describes what's going on in the video and the words that appear onscreen along with what people are saying.



None of these videos have captions. Even without dialogue, if there's music playing the caption should be [Music] so the Deaf user doesn't think that there is dialogue they're missing. Also none of them have a companion Visual Description/transcript document that describes what's going on in the video along and the words that appear onscreen.



This `<h2>` is not house style:

`<h2> Maryland CTE </h2>`

[> Maryland CTE Programs Home](#)

House style is black and left justified:

`<h2>Maryland CTE</h2>`

[> Maryland CTE Programs Home](#)

DECA

<http://www.marylandpublicschools.org/programs/Pages/CTE-Programs-of-Study/CTSOs/DECA.aspx>



<h2> </h2>

Remove blank <h2> line.

Discover Other Career Technology Student Organizations <h2> don't center



<h2>

</h2>

Remove blank <h2> line.

<h2>Maryland CTE Don't center <h2>

</h2>

> Maryland CTE Programs

alt=



No alt text. These are actual DECA members, not stock photo, so there needs to be a description. Something like: three high school boys and three high school girls wearing DECA blazers make the DECA hand signal.

For this, and all the following CTSO pages:



Alt="DECA. An association of marketing students."



Alt="FBLA Phi Beta Lambda"



alt - "FFA Agricultural Education."



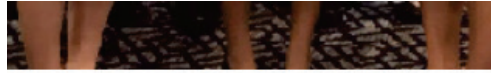
alt="Skills USA"

[PAGE HAS NO HEADLINE]

<http://www.marylandpublicschools.org/programs/Pages/CTE-Programs-of-Study/CTSOs/FBLA.aspx>

<h1></h1>

No PageHeadline, so blank <h1>



<h2>
</h2>

<h2> </h2>

Remove blank <h2> lines.

This <h2> is not house style:

<h2> Maryland CTE</h2>

House style is black and left justified:

<h2>Maryland CTE</h2>

> Maryland CTE Programs
Home

> Maryland CTE Programs
Home

alt=



Alt text should be something like: 10 high school students (5 boys, 5 girls) in matching FBLA blazers in front of a banner that says Maryland FBLA.

[Discover Other Career Technology Student Organizations](#) <h2> don't center

FFA

<http://www.marylandpublicschools.org/programs/Pages/CTE-Programs-of-Study/CTSOs/FFA.aspx>



Alt text should be something like “4 high school girls and two high school boys in matching blazers hold an enormous gavel.”

Discover Other Career Technology Student Organizations <h2> don't center

This <h2> is not house style:

<h2> Maryland CTE</h2>

> [Maryland CTE Programs Home](#)

House style is black and left justified:

<h2>Maryland CTE</h2>

> [Maryland CTE Programs Home](#)

Career Technology Student Organizations (CTSO)

<http://test.msde.maryland.gov/programs/Pages/CTE-Programs-of-Study/CTSOs/Index.aspx>

Why Have A CTSO? <h2>

STUDENT BENEFITS <h3>

TEACHER BENEFITS <h3>

BUSINESS BENEFITS <h3>

This <h2> is not house style:

<h2> Maryland CTE </h2>

> Maryland CTE Programs
Home

House style is black and left justified:

<h2> Maryland CTE </h2>

> Maryland CTE Programs
Home

SkillsUSA: Job Ready on Day One!

<http://www.marylandpublicschools.org/programs/Pages/CTE-Programs-of-Study/CTSOs/SkillsUSA.aspx>

<h2>



</h2>

Graphics don't need heading tags.

Discover Other Career Technology Student Organizations <h2> don't center



Alt="Eight high school students (four boys and four girls) in matching red blazers."

Can a student complete a program of study and meet all of the course requirements for college entry?

<http://www.marylandpublicschools.org/programs/Pages/CTE-Programs-of-Study/FAQ/StudentCollegeEntry.aspx>

All of these are WAY TOO LONG:

Title

Can a student complete a program of stu

PageHeadline

Can a student complete a program of stu

PageKeywords

Can a student complete a program of stu

PageDescription

Can a student complete a program of stu

High School Program					College Program
Requirements	Grade 9	Grade 10	Grade 11	Grade 12	
English - 4	English 9	English 10	English 11 AP Language	English 12 AP Literature	English/Language Arts <i>Include AP credit options</i>
Social Studies - 3	US Government	World History AP European	US History AP US History	Government AP Govt.	Humanities/Social Sciences <i>Include AP credit options</i>
Mathematics - 3	Algebra I	Geometry	Algebra II	Trigonometry or Pre-Calculus or Calculus or AP Calculus	Mathematics <i>Include AP credit options</i>

Blurry. Not accessible to sighted people.

[Download a printable copy](#) 

It's a tagged PDF, but it's not formatted as a table. Each line is tagged as a paragraph, which messes up the intended reading order. For example, that means the Mathematics requirements are read like this: Mathematics - 3 Algebra I Geometry Algebra II Trigonometry Mathematics or Pre-Calculus Include AP credit options or Calculus or AP Calculus

In a properly formatted table, it would be read like this:

Requirements: Mathematics – 3. Grade 9: Algebra I. Grade 10: Geometry. Grade 11: Algebra II. Grade 12: Trigonometry or Pre-Calculus or Calculus or AP Calculus. College Program: Mathematics Include AP credit options.

If this was done in InDesign, the designer should be able to go back and tag the document properly (rows, columns, row headers, etc.)

Profiles

<http://marylandpublicschools.org/programs/Pages/CTE-Programs-of-Study/Profiles/Index.aspx>

The Title of the page should be “Profiles” or, even better, “Career and Technology Education Profiles.” There are dozens of index.aspx pages in this website. Page Title should be unique to this page.

SEO Page Properties

Title

PageHeadline

<h2>

Preparing for the Real World



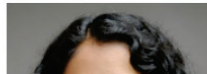
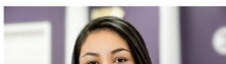
Eddie M.



Hailey B.



Jackson L.



Entire page from here down is enclosed in the `<h2>`. Only the heading `<h2>Preparing for the Real World</h2>` should be enclosed in the tag. When the whole page is enclosed in the `<h2>`, the screen reading software announces “Heading Level 2” before each individual thing on the page, making it difficult to hear the actual content.

Where are They Now?



Teacher Profiles



These should both be `<h2>`.

- > CTE Awards of Excellence
- > CTE Videos

<h2>

</h2>

<h2>

</h2>

<h2></h2>

Remove three blank headings in left navigation.

Profiles

ISSUE 1 pertains to ALL Profile pages:

<http://marylandpublicschools.org/programs/Pages/CTE-Programs-of-Study/Profiles/Aaron-M.aspx>
<http://marylandpublicschools.org/programs/Pages/CTE-Programs-of-Study/Profiles/Alex-Y.aspx>
<http://marylandpublicschools.org/programs/Pages/CTE-Programs-of-Study/Profiles/Andrew-J.aspx>
<http://marylandpublicschools.org/programs/Pages/CTE-Programs-of-Study/Profiles/Chandler-K.aspx>
<http://marylandpublicschools.org/programs/Pages/CTE-Programs-of-Study/Profiles/Eddie-M.aspx>
<http://marylandpublicschools.org/programs/Pages/CTE-Programs-of-Study/Profiles/Hailey-F.aspx>
<http://marylandpublicschools.org/programs/Pages/CTE-Programs-of-Study/Profiles/Jackson-L.aspx>
<http://marylandpublicschools.org/programs/Pages/CTE-Programs-of-Study/Profiles/Jenny-R.aspx>
<http://marylandpublicschools.org/programs/Pages/CTE-Programs-of-Study/Profiles/Kimberly-C.aspx>
<http://marylandpublicschools.org/programs/Pages/CTE-Programs-of-Study/Profiles/Laila-M.aspx>
<http://marylandpublicschools.org/programs/Pages/CTE-Programs-of-Study/Profiles/Luke-M.aspx>
<http://marylandpublicschools.org/programs/Pages/CTE-Programs-of-Study/Profiles/Michael-F.aspx>
<http://marylandpublicschools.org/programs/Pages/CTE-Programs-of-Study/Profiles/Myan-M.aspx>
<http://marylandpublicschools.org/programs/Pages/CTE-Programs-of-Study/Profiles/Regina-N.aspx>
<http://marylandpublicschools.org/programs/Pages/CTE-Programs-of-Study/Profiles/Robin-G.aspx>
<http://marylandpublicschools.org/programs/Pages/CTE-Programs-of-Study/Profiles/Taylor-M.aspx>
<http://marylandpublicschools.org/programs/Pages/CTE-Programs-of-Study/Profiles/Zach-P.aspx>

Aaron - National Academy of Finance

Why did you choose this CTE Program of Study?

When choosing a high school to attend, the Academy of Finance stood out

Each question should be

ISSUE 2:

<http://marylandpublicschools.org/programs/Pages/CTE-Programs-of-Study/Profiles/Aaron-M.aspx>
<http://marylandpublicschools.org/programs/Pages/CTE-Programs-of-Study/Profiles/Alex-Y.aspx>
<http://marylandpublicschools.org/programs/Pages/CTE-Programs-of-Study/Profiles/Andrew-J.aspx>
<http://marylandpublicschools.org/programs/Pages/CTE-Programs-of-Study/Profiles/Eddie-M.aspx>
<http://marylandpublicschools.org/programs/Pages/CTE-Programs-of-Study/Profiles/Hailey-F.aspx>
<http://marylandpublicschools.org/programs/Pages/CTE-Programs-of-Study/Profiles/Jackson-L.aspx>
<http://marylandpublicschools.org/programs/Pages/CTE-Programs-of-Study/Profiles/Jenny-R.aspx>
<http://marylandpublicschools.org/programs/Pages/CTE-Programs-of-Study/Profiles/Kimberly-C.aspx>
<http://marylandpublicschools.org/programs/Pages/CTE-Programs-of-Study/Profiles/Laila-M.aspx>
<http://marylandpublicschools.org/programs/Pages/CTE-Programs-of-Study/Profiles/Luke-M.aspx>
<http://marylandpublicschools.org/programs/Pages/CTE-Programs-of-Study/Profiles/Michael-F.aspx>
<http://marylandpublicschools.org/programs/Pages/CTE-Programs-of-Study/Profiles/Myan-M.aspx>
<http://marylandpublicschools.org/programs/Pages/CTE-Programs-of-Study/Profiles/Regina-N.aspx>
<http://marylandpublicschools.org/programs/Pages/CTE-Programs-of-Study/Profiles/Robin-G.aspx>
<http://marylandpublicschools.org/programs/Pages/CTE-Programs-of-Study/Profiles/Taylor-M.aspx>
<http://marylandpublicschools.org/programs/Pages/CTE-Programs-of-Study/Profiles/Zach-P.aspx>

This is not house style:

Maryland CTE

› Maryland CTE Programs
Home

House style is black and left justified:

Maryland CTE

› Maryland CTE Programs
Home

ISSUE 3:

<http://marylandpublicschools.org/programs/Pages/CTE-Programs-of-Study/Profiles/Alex-Y.aspx>
<http://marylandpublicschools.org/programs/Pages/CTE-Programs-of-Study/Profiles/Andrew-J.aspx>
<http://marylandpublicschools.org/programs/Pages/CTE-Programs-of-Study/Profiles/Chandler-K.aspx>
<http://marylandpublicschools.org/programs/Pages/CTE-Programs-of-Study/Profiles/Eddie-M.aspx>
<http://marylandpublicschools.org/programs/Pages/CTE-Programs-of-Study/Profiles/Jackson-L.aspx>
<http://marylandpublicschools.org/programs/Pages/CTE-Programs-of-Study/Profiles/Jenny-R.aspx>
<http://marylandpublicschools.org/programs/Pages/CTE-Programs-of-Study/Profiles/Kimberly-C.aspx>
<http://marylandpublicschools.org/programs/Pages/CTE-Programs-of-Study/Profiles/Laila-M.aspx>
<http://marylandpublicschools.org/programs/Pages/CTE-Programs-of-Study/Profiles/Luke-M.aspx>
<http://marylandpublicschools.org/programs/Pages/CTE-Programs-of-Study/Profiles/Michael-F.aspx>
<http://marylandpublicschools.org/programs/Pages/CTE-Programs-of-Study/Profiles/Myan-M.aspx>

<h1>Alex Y</h1>

How does the FBLA program prepare you to enter either college or a career?

I can honestly say that without FBLA, I would not be the person I am today. FBLA is an org

Inconsistent style. Each question should be <h2> AND black.

ISSUE 4:

<http://marylandpublicschools.org/programs/Pages/CTE-Programs-of-Study/Profiles/Hailey-F.aspx>

<h1> </h1>

Hailey is a senior at Perry Hall High School where she is preparing f
engineer and industrial designer. She explored and expanded her p
CTE design courses. She took her enthusiasm for engineering outsi
first Society of Women Engineers (SWE) chapter in a Baltimore Co
SWE chapter was driven by her desire to work on hands on projects

Page has no headline.